

Figure 1
Pattern 1-4 Well Allocation

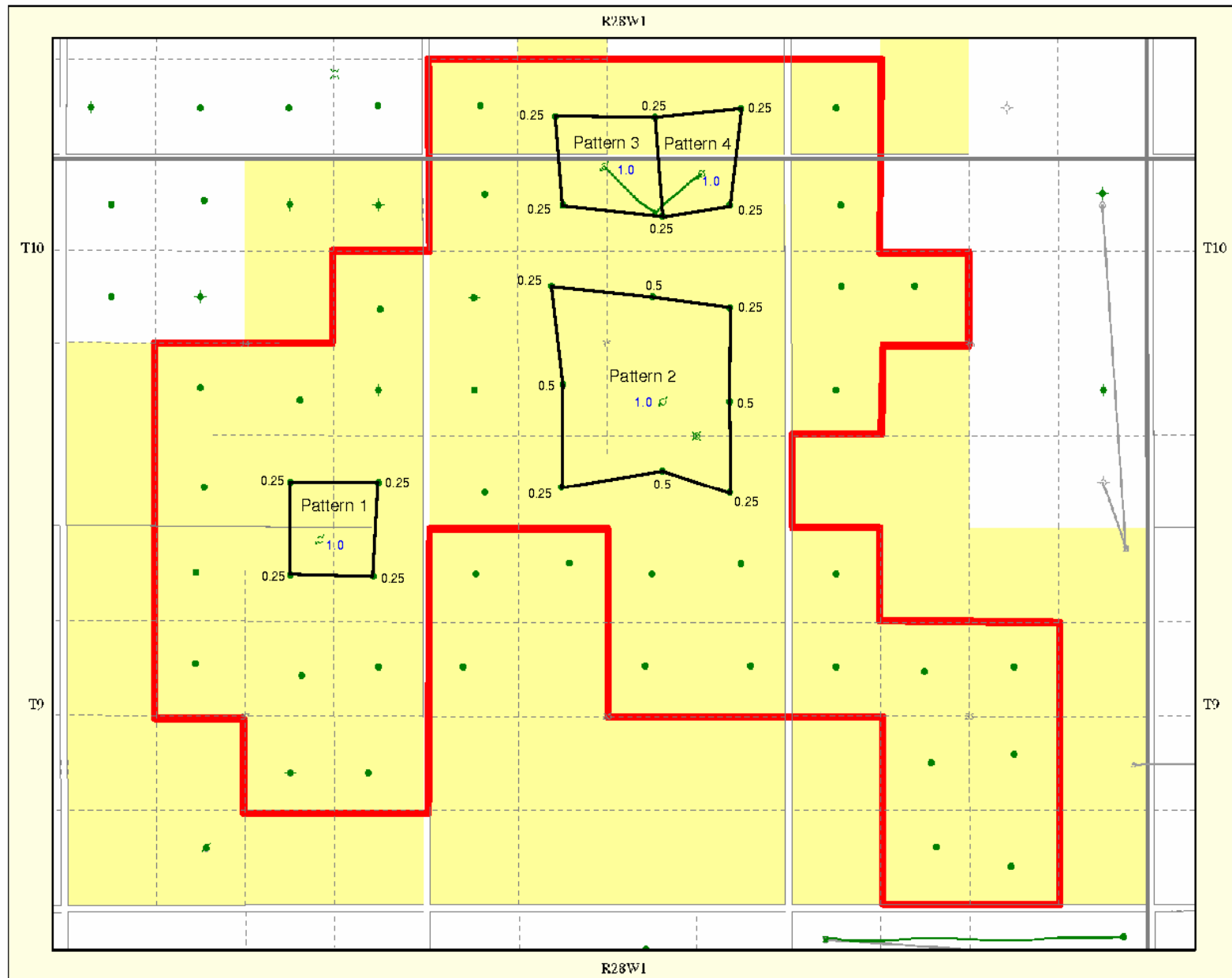


Figure 2

Total Unit Performance - Daly Unit #4

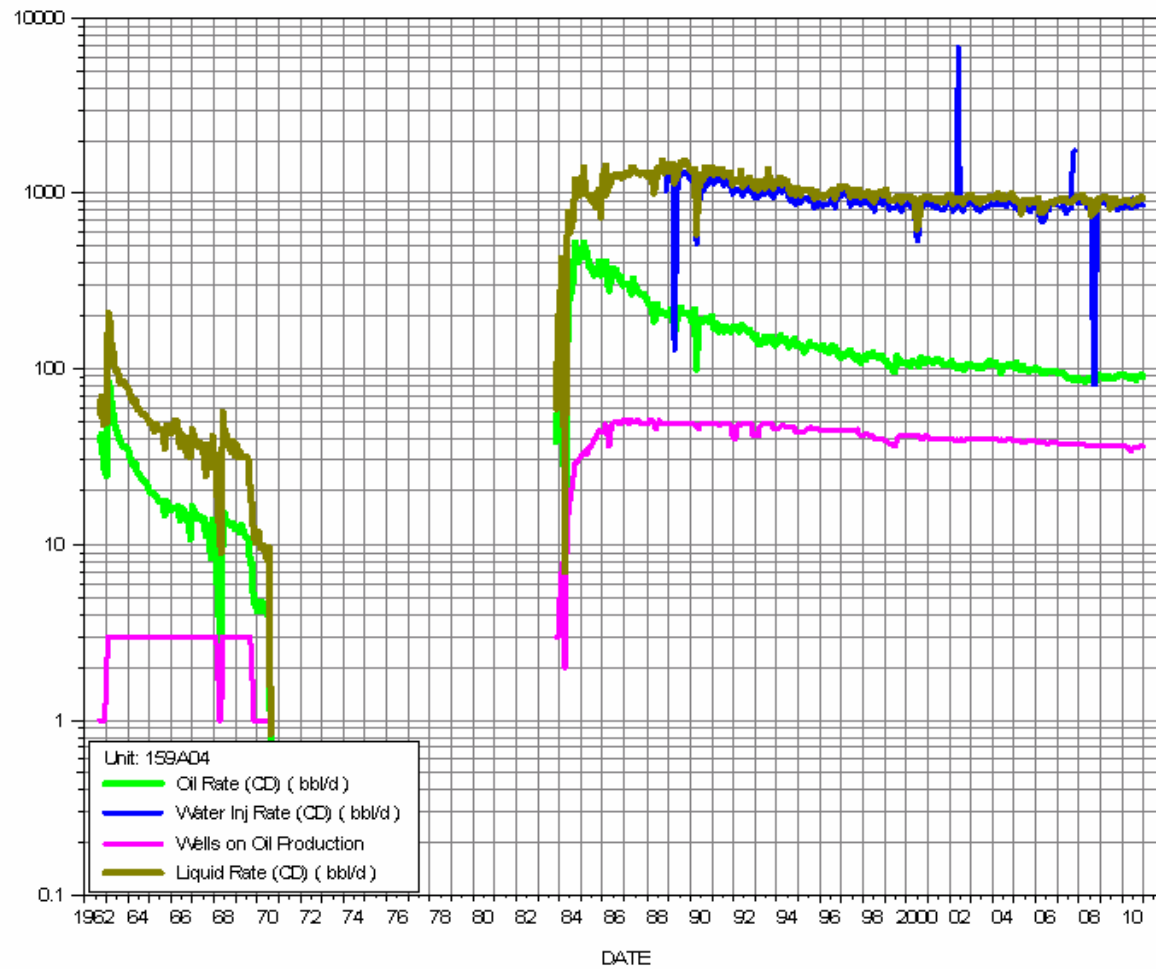


Figure 3

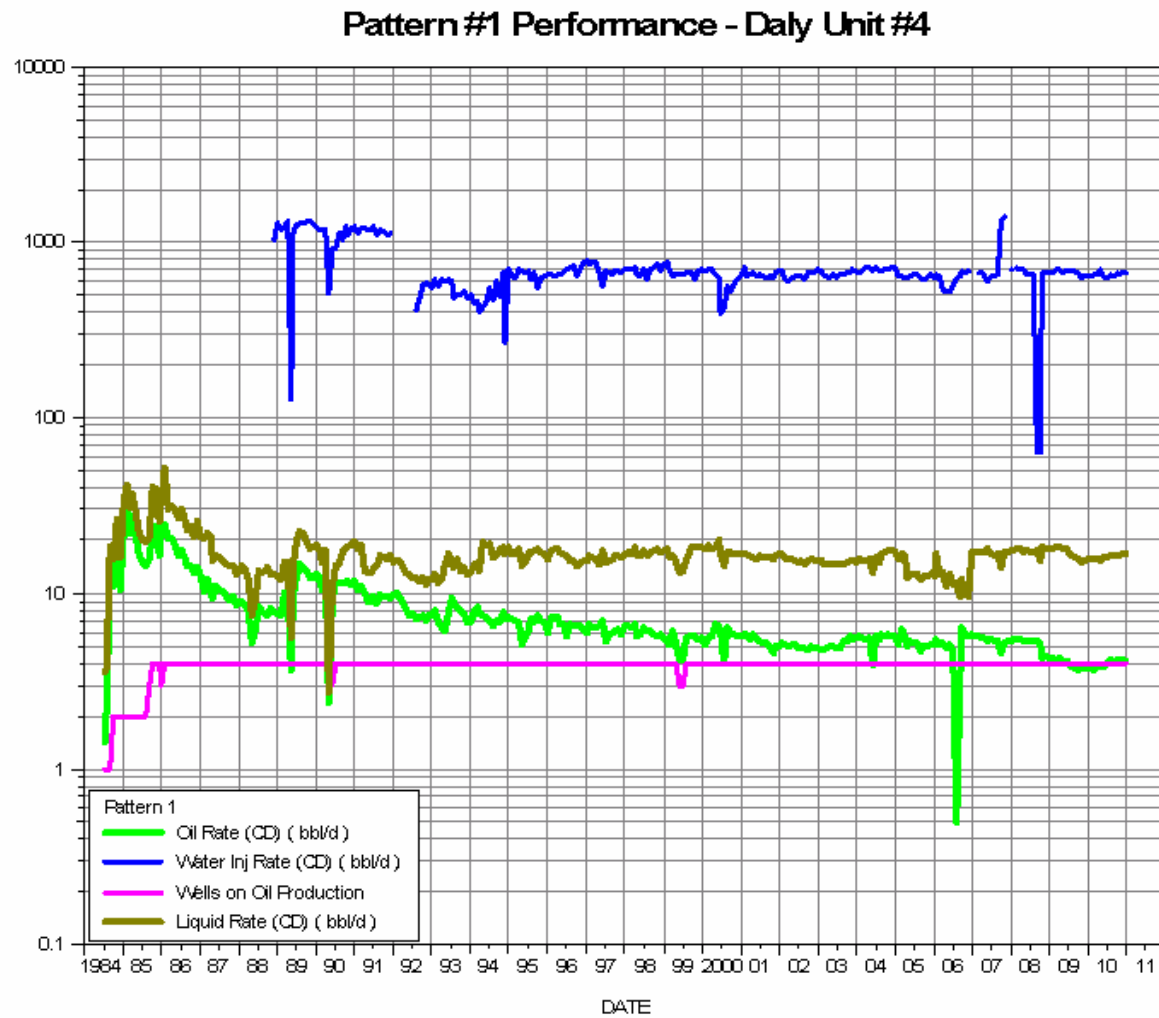


Figure 4

Pattern #2 Performance - Daly Unit #4

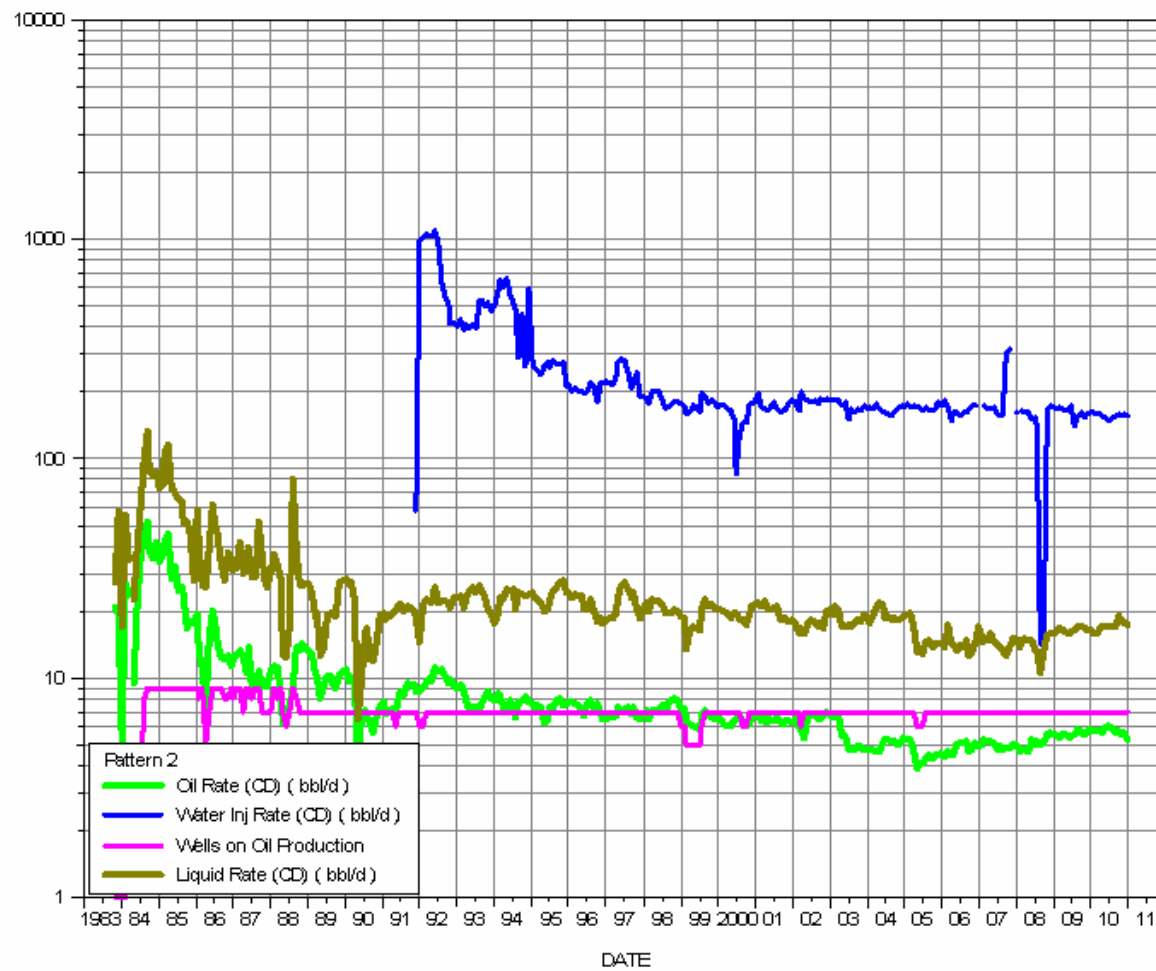


Figure 5

Pattern #3 Performance - Daly Unit #4

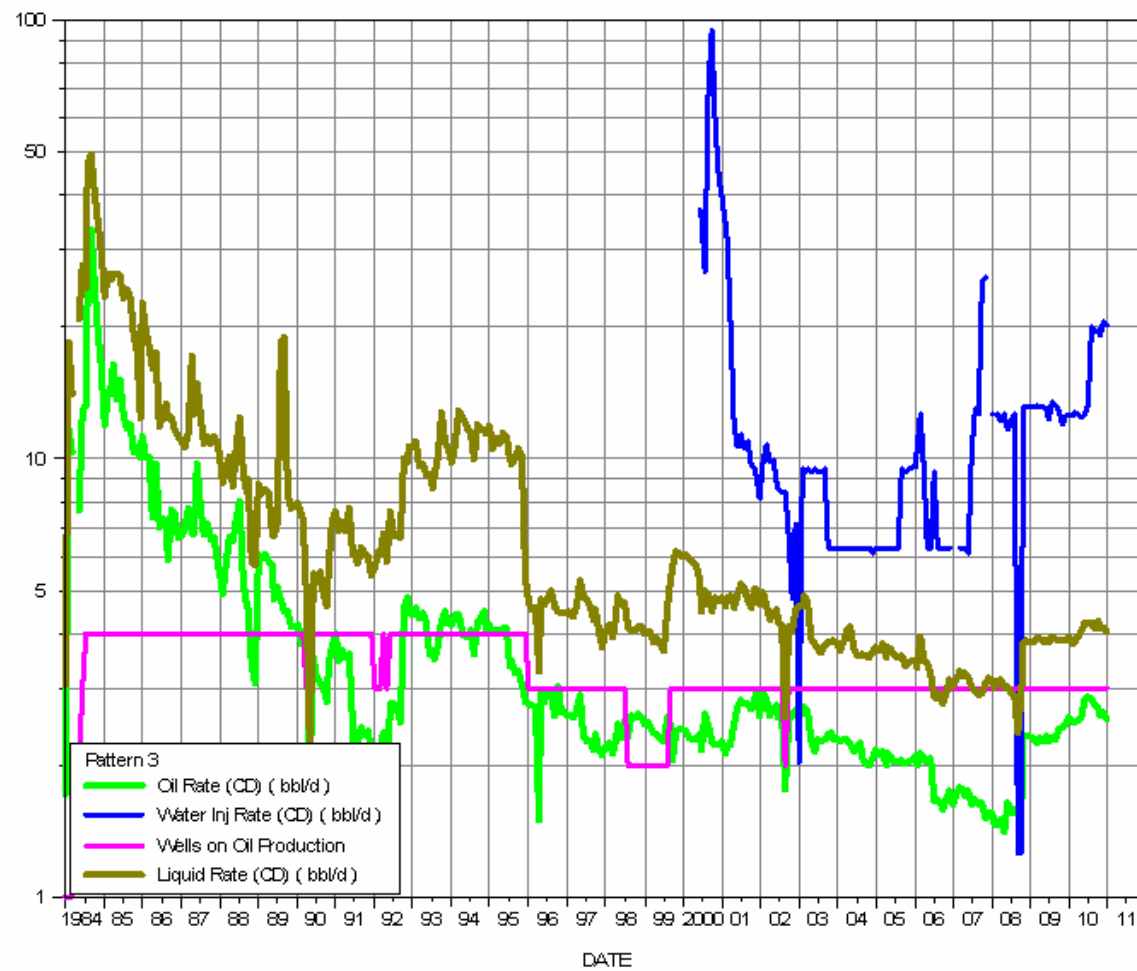


Figure 6

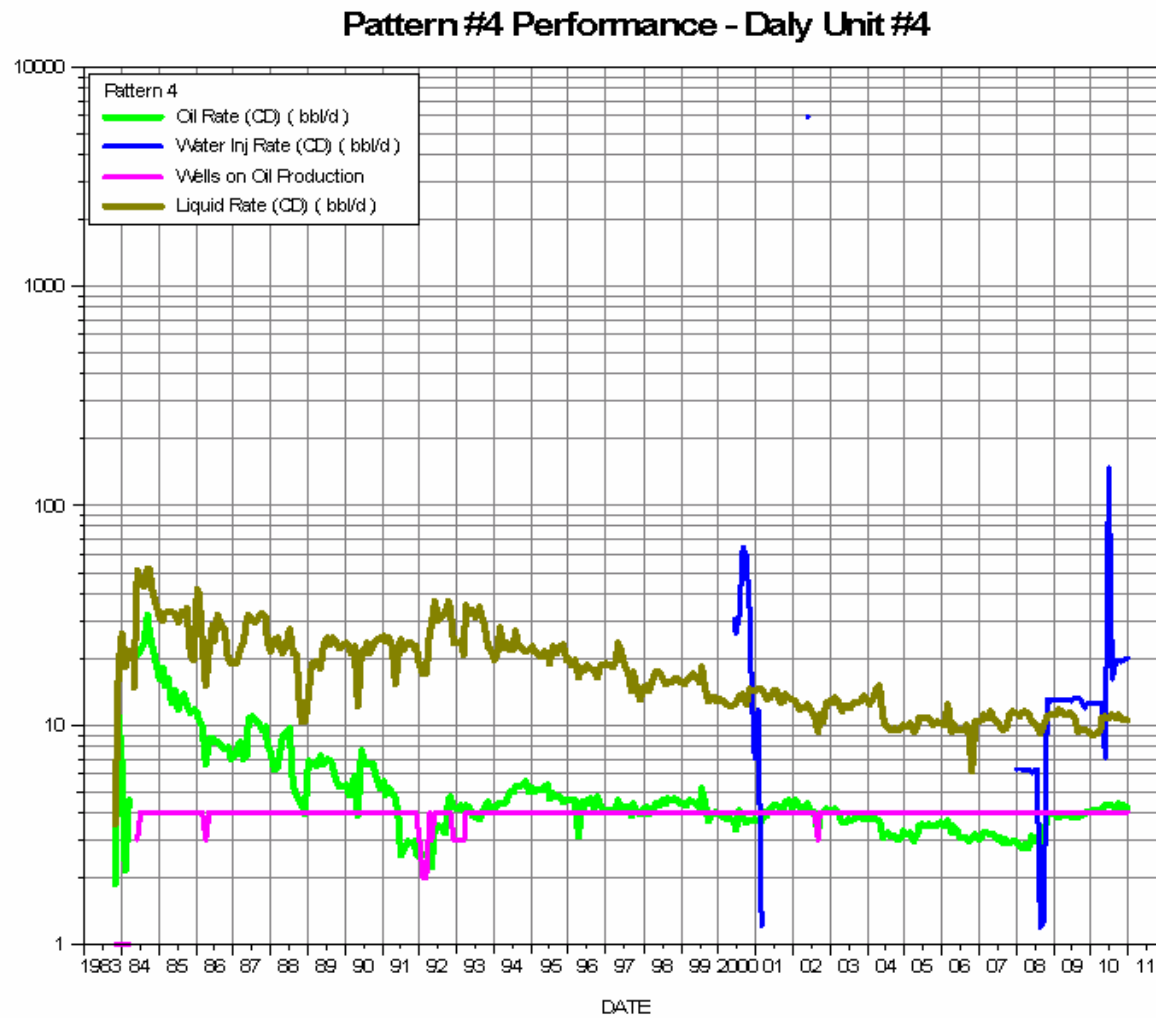


Figure 7

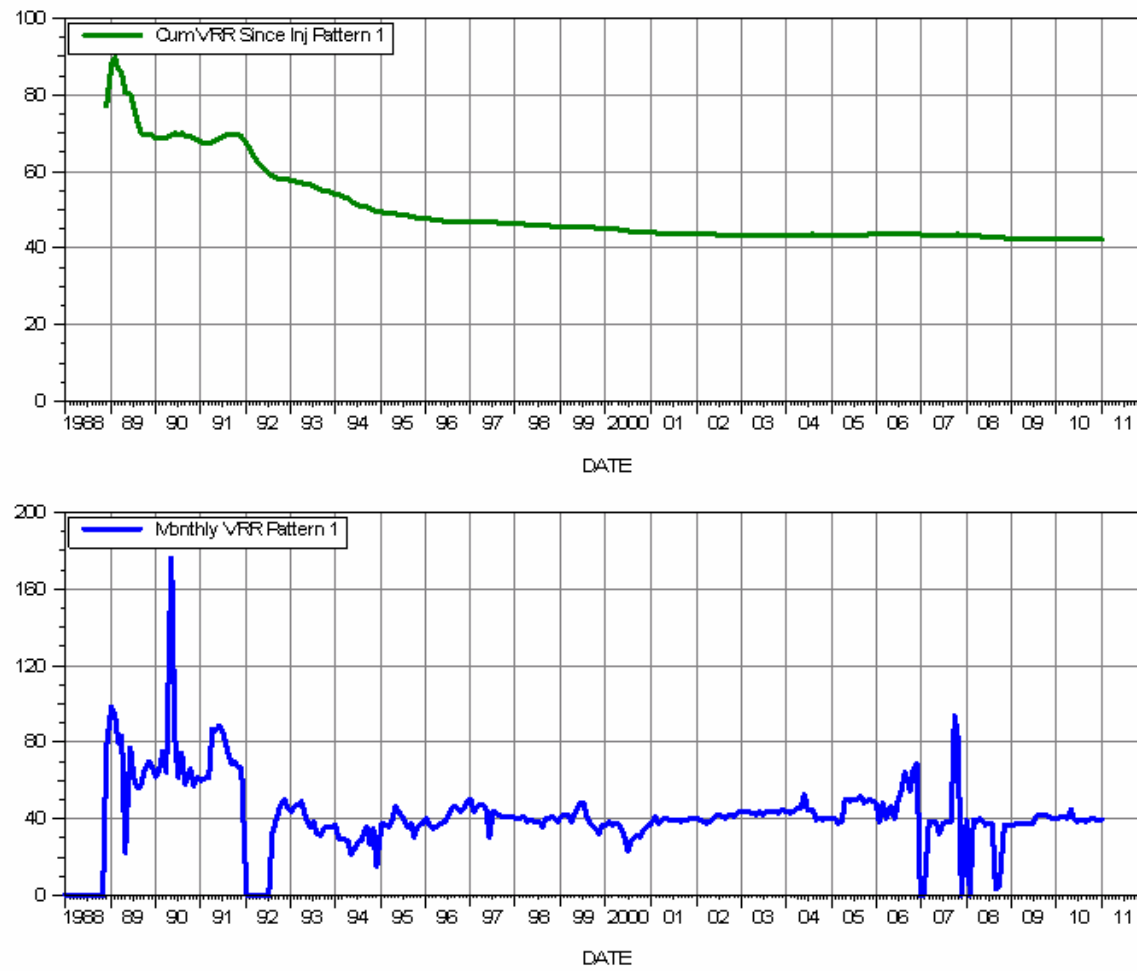


Figure 8

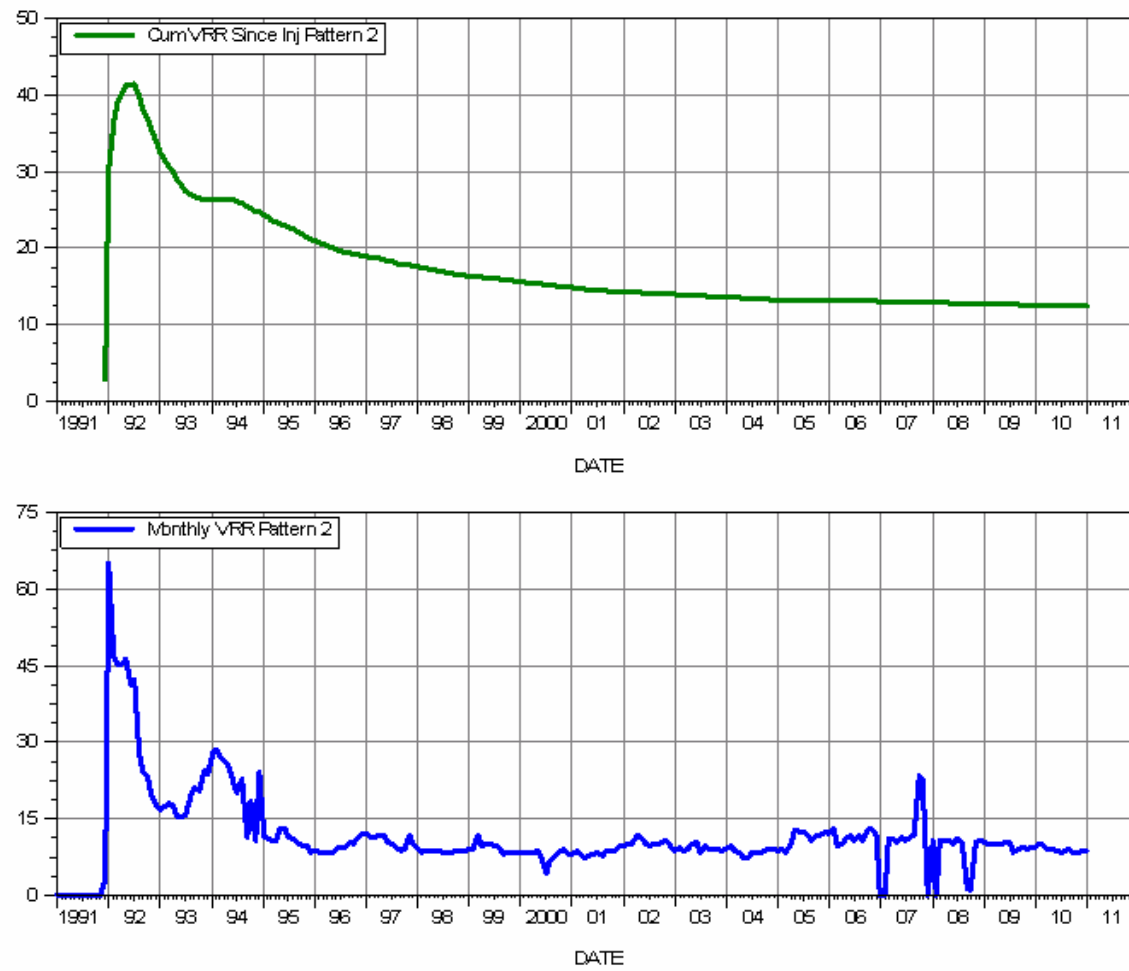


Figure 9

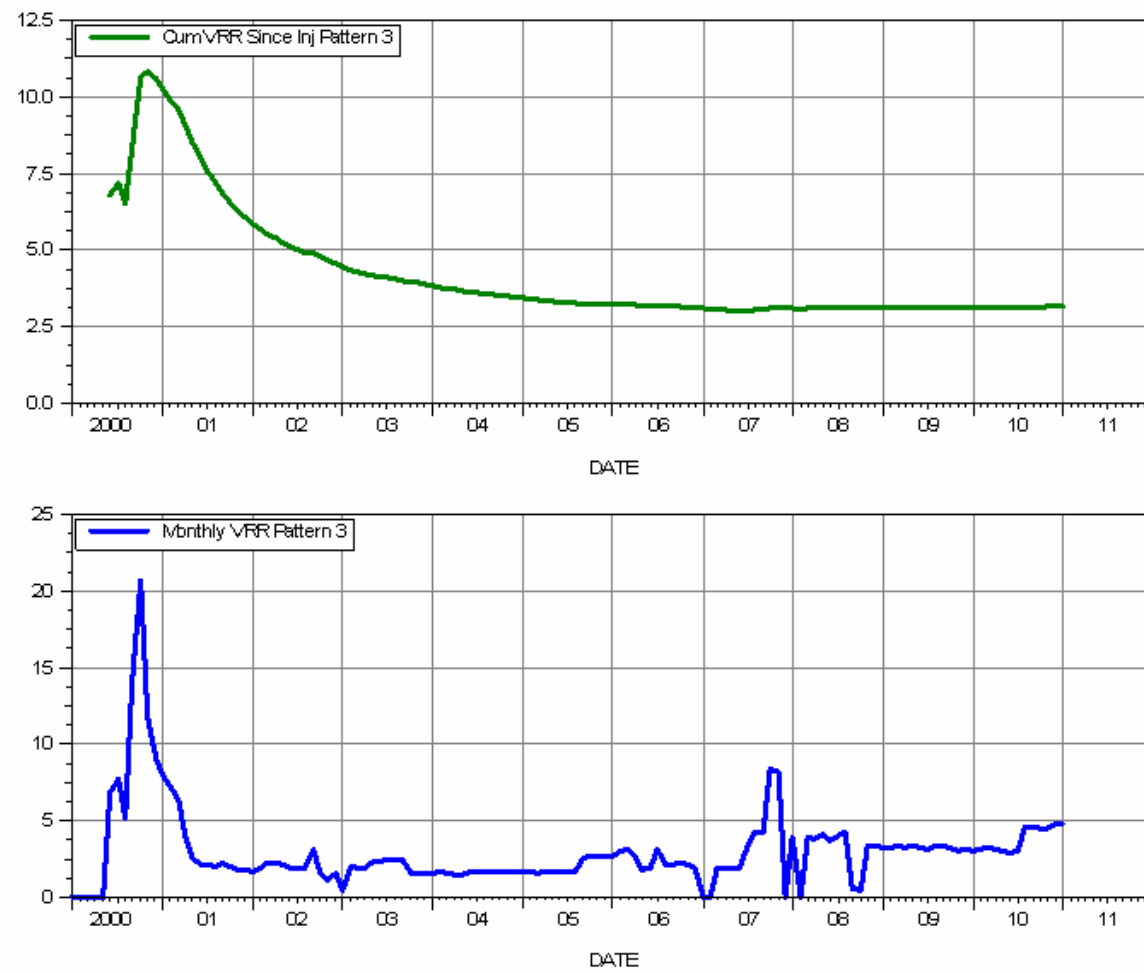


Figure 10

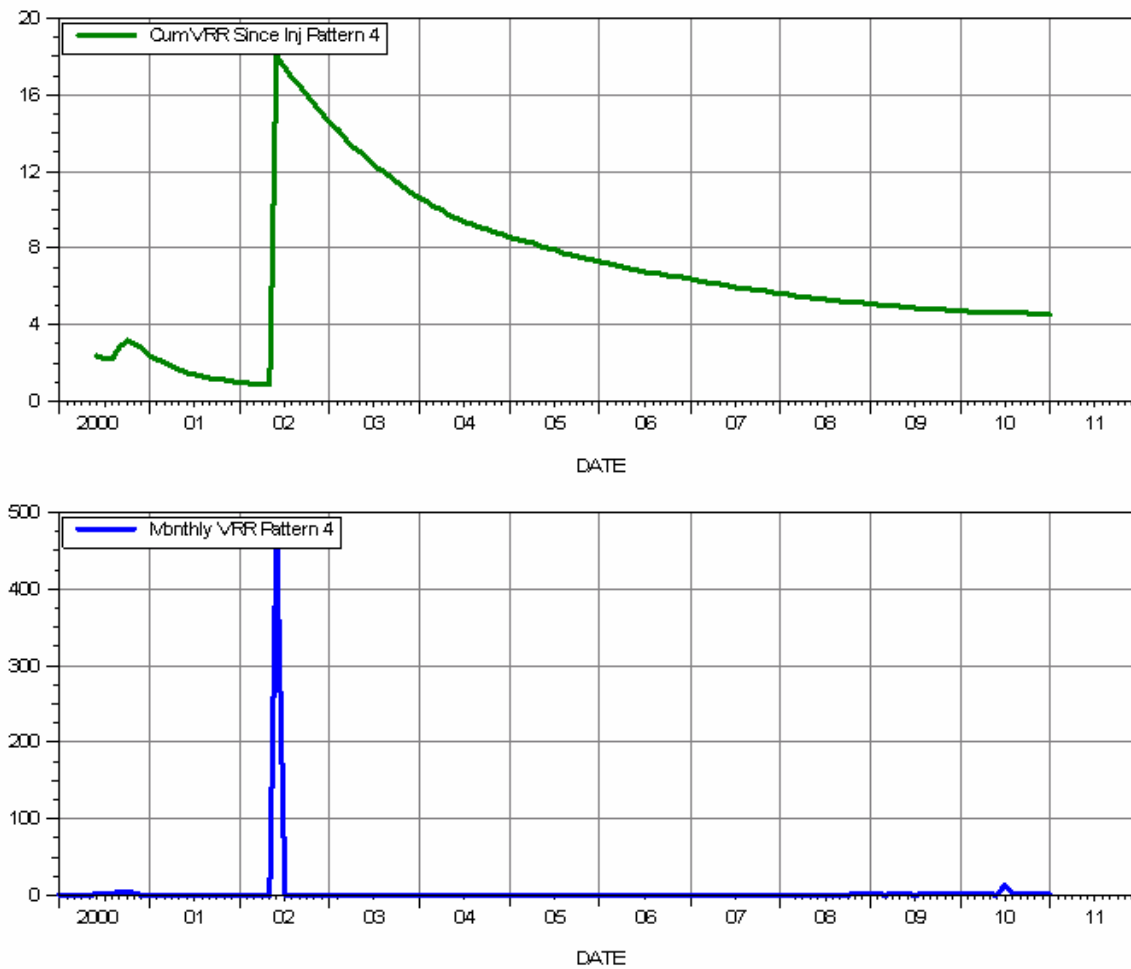


Figure 11

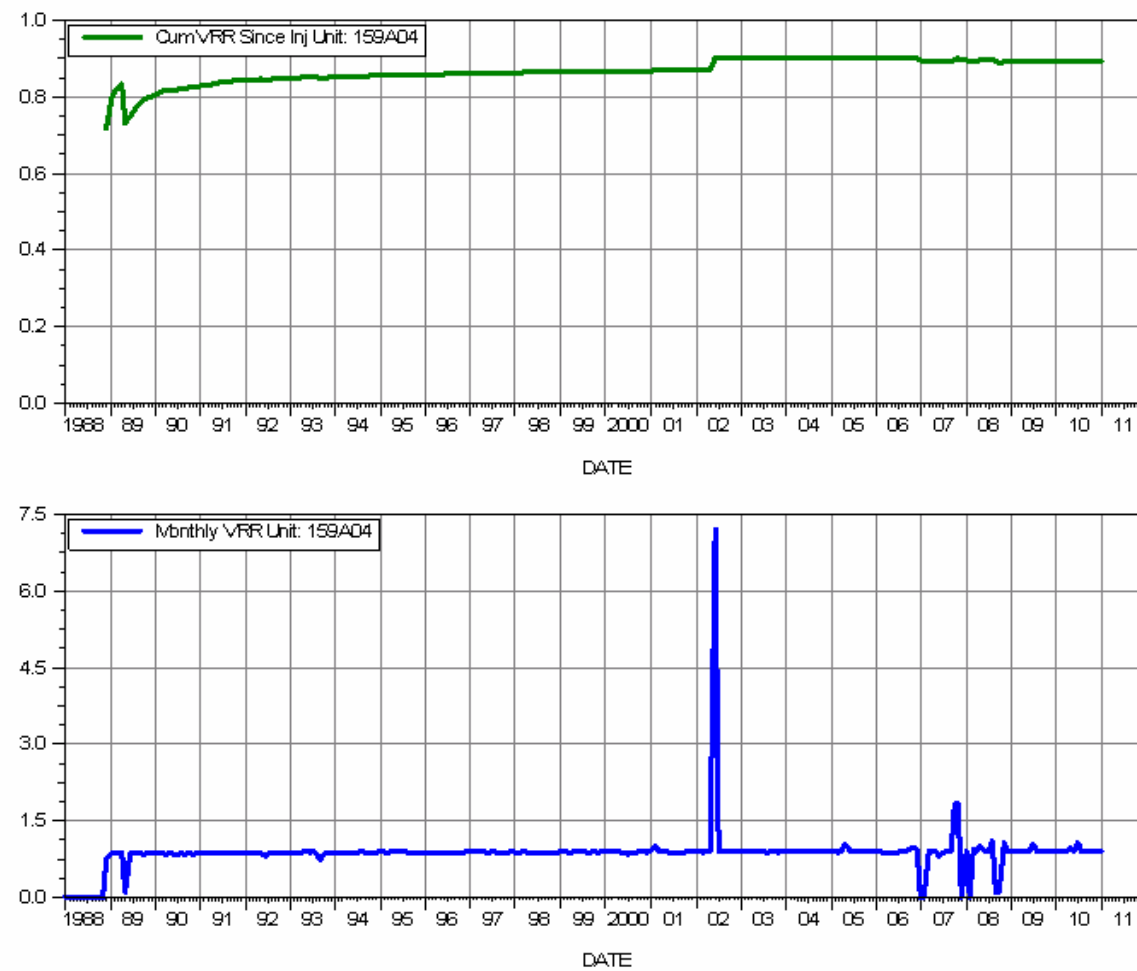
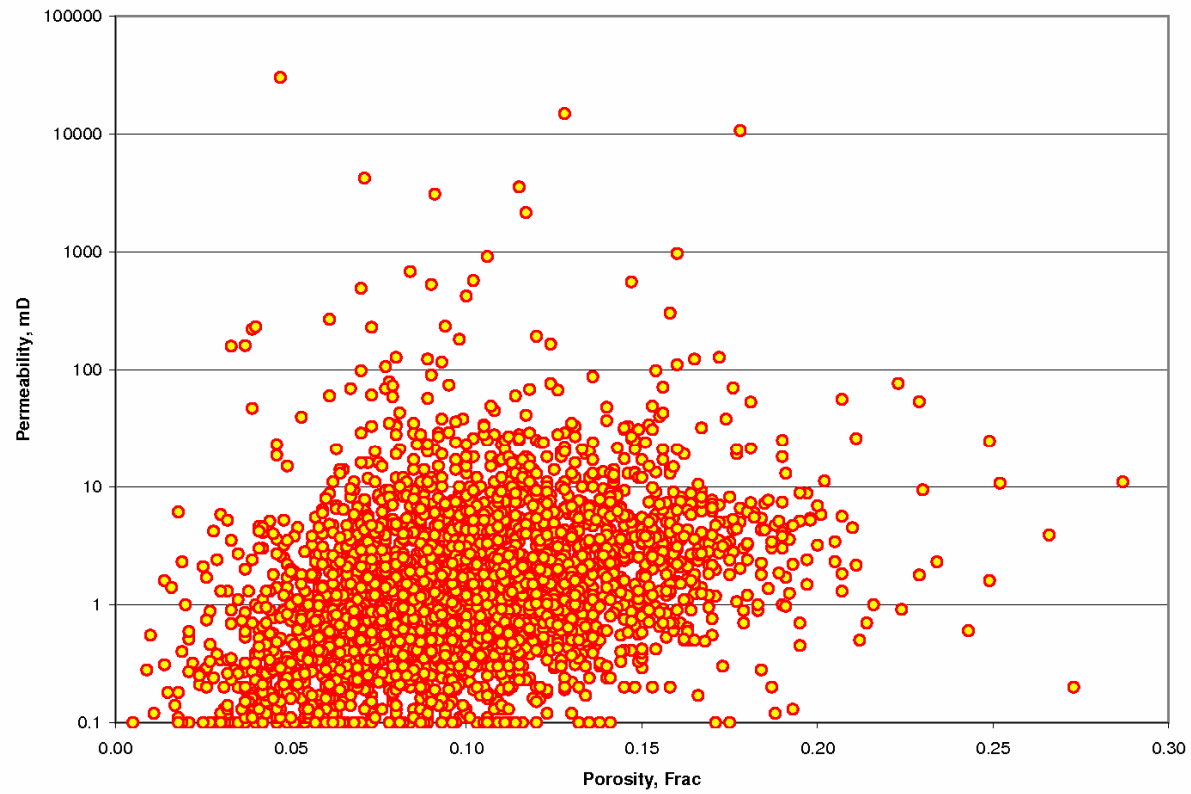


Figure 12
Core X-Plot



Tables 1-3

Table 1 Production Rates for Patterns 1-4 and Daly Unit #4 Summary

Date	Pattern #1			Pattern #2			Pattern #3			Pattern #4			Sum Of Patterns 1-4			Daly Unit #4 Total		
	Oil Rate (CD) bbl/d	Water Inj Rate (CD) bbl/d	Water Oil Ratio bbl/bbl	Oil Rate (CD) bbl/d	Water Inj Rate (CD) bbl/d	Water Oil Ratio bbl/bbl	Oil Rate (CD) bbl/d	Water Inj Rate (CD) bbl/d	Water Oil Ratio bbl/bbl	Oil Rate (CD) bbl/d	Water Inj Rate (CD) bbl/d	Water Oil Ratio bbl/bbl	Oil Rate (CD) bbl/d	Water Inj Rate (CD) bbl/d	Water Oil Ratio bbl/bbl	Oil Rate (CD) bbl/d	Water Inj Rate (CD) bbl/d	Water Oil Ratio bbl/bbl
01/01/2010	3.8	643.1	3.2	5.8	161.1	1.9	2.6	12.5	0.5	4.0	12.5	1.3	16.2	829.2	1.8	93.4	829.2	8.7
02/01/2010	3.8	650.6	3.2	5.7	163.5	1.8	2.5	12.6	0.5	4.1	12.6	1.2	16.1	839.2	1.8	93.5	839.2	8.8
03/01/2010	3.7	658.3	3.3	5.7	158.4	1.8	2.5	12.7	0.5	4.0	12.7	1.3	15.9	842.2	1.8	91.9	842.2	9.0
04/01/2010	3.8	652.0	3.2	5.7	158.3	2.0	2.5	12.6	0.6	4.1	12.6	1.3	16.1	835.5	1.9	91.2	835.5	9.0
05/01/2010	3.8	703.2	3.1	5.6	155.9	2.1	2.6	12.5	0.6	4.1	12.5	1.6	16.1	884.0	1.9	88.3	884.0	9.2
06/01/2010	3.9	646.2	3.2	5.9	153.6	1.9	2.8	12.6	0.5	4.3	7.2	1.6	16.9	819.6	1.9	89.5	819.6	9.0
07/01/2010	4.0	630.3	3.0	6.1	149.6	1.8	2.9	13.2	0.5	4.3	149.6	1.5	17.2	842.8	1.8	91.3	842.8	8.6
08/01/2010	4.2	652.5	3.0	5.9	154.1	1.9	2.8	20.1	0.5	4.3	16.2	1.6	17.1	842.8	1.9	90.8	842.8	9.1
09/01/2010	4.1	647.8	3.0	5.7	155.8	2.0	2.7	19.4	0.5	4.2	19.6	1.6	16.7	842.6	1.9	87.8	842.6	9.5
10/01/2010	4.2	667.0	3.0	5.7	159.3	2.3	2.7	19.6	0.6	4.4	19.6	1.6	16.9	865.6	2.0	91.9	865.6	9.3
11/01/2010	4.1	658.4	3.0	5.5	155.7	2.3	2.6	19.2	0.6	4.2	19.4	1.6	16.4	852.7	2.0	91.7	852.7	9.2
12/01/2010	4.2	676.2	3.1	5.6	158.9	2.2	2.6	20.5	0.6	4.3	19.9	1.5	16.7	875.5	2.0	93.4	875.5	9.3

Table 2 Cumulative Production Rates for Patterns 1-4 and Daly Unit #4 Summary

Date	Pattern #1			Pattern #2			Pattern #3			Pattern #4			Sum Of Patterns 1-4			Daly Unit #4 Total		
	Cum Oil Mbbl	Cum Wat Mbbl	Cum Winj Mbbl	Cum Oil Mbbl	Cum Wat Mbbl	Cum Winj Mbbl	Cum Oil Mbbl	Cum Wat Mbbl	Cum Winj Mbbl	Cum Oil Mbbl	Cum Wat Mbbl	Cum Winj Mbbl	Cum Oil Mbbl	Cum Wat Mbbl	Cum Winj Mbbl	Cum Oil Mbbl	Cum Wat Mbbl	Cum Winj Mbbl
12/01/2010	73.8	88.4	5535.3	88.7	153.2	1690.9	39.7	35.9	48.8	52.7	129.2	203.0	254.9	406.7	7478.0	1608.0	8808.2	7478.0

Table 3 Instantaneous/Cumulative Voidage Replacement Ratio for Patterns 1-4 and Daly Unit #4 Summary

Date	Pattern #1		Pattern #2		Pattern #3		Pattern #4		Daly Unit #4 Total	
	Monthly VRR	Cum VRR Since Inj	Monthly VRR	Cum VRR Since Inj	Monthly VRR	Cum VRR Since Inj	Monthly VRR	Cum VRR Since Inj	Monthly VRR	Cum VRR Since Inj
01/01/2010	40.0	42.4	9.5	12.6	3.1	3.1	1.3	4.7	0.906	0.892
02/01/2010	40.2	42.4	10.1	12.6	3.2	3.1	1.4	4.7	0.910	0.893
03/01/2010	40.9	42.4	9.7	12.6	3.2	3.1	1.4	4.7	0.911	0.893
04/01/2010	40.6	42.4	9.2	12.5	3.1	3.1	1.3	4.7	0.910	0.893
05/01/2010	44.6	42.4	8.9	12.5	3.0	3.1	1.1	4.6	0.980	0.893
06/01/2010	39.7	42.4	8.8	12.5	2.9	3.1	0.6	4.6	0.908	0.893
07/01/2010	38.4	42.4	8.5	12.5	3.0	3.1	13.5	4.7	1.073	0.894
08/01/2010	39.0	42.4	8.8	12.5	4.6	3.1	1.4	4.6	0.909	0.894
09/01/2010	38.6	42.3	8.9	12.5	4.5	3.1	1.8	4.6	0.907	0.894
10/01/2010	39.7	42.3	8.2	12.4	4.4	3.2	1.7	4.6	0.914	0.894
11/01/2010	39.7	42.3	8.3	12.4	4.5	3.2	1.8	4.6	0.911	0.894
12/01/2010	39.5	42.3	8.7	12.4	4.8	3.2	1.8	4.6	0.909	0.894

*Bo assumed 1.0652 rb/stb, Rs = 122 scf/stb